

Institutional Design

Lincolnwood Village Hall Promenade

Lincolnwood, Illinois



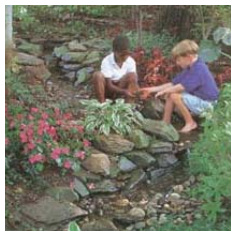
Lincolnwood Village Hall Promenade

Before its renovation, Lincolnwood Village Hall's pedestrian entry had deteriorated sidewalks, outdated lighting, and suffering plant material. There were also safety concerns as the boundaries of the parking lot and the pedestrian walkway was often ignored, causing unsafe pedestrian and vehicular interactions. In order to correct these problems, LDC developed a landscape design plan that reflected the village's commitment to developing spaces that "promotes the health, safety, welfare and pleasure of all the residents (Lincolnwood Parks and Recreation Mission Statement).



Lake Forest Community Center Kinderhaven Playground

Lake Forest, Illinois



Lake Forest Community Center Kinderhaven Playground

This play area was designed as an environment to serve many purposes in early childhood development. Secured by an ornamental fence, many activities are provided: spaces for group activities and group play, play equipment areas with sliding, climbing, balance and a space for simple motion/movement/rocking for younger children. A garden area with raised beds for growing vegetables and flowers stimulates a hands-on connection with the environment.

A "natural area" with a stream/pond/plant "Trail" provides the small child a sense of immersion into a natural place where stepping stones lead them through tall grasses. The pathway joining these spaces is designed in a "loop" so the visitor has a sense of a larger space yet is never concerned about being lost. This is especially useful for small children as well as the elderly and dementia affected seniors.

This is a place for learning and where a multigenerational family can share a visit with young children and the elderly.





Krasl Art Center

LDC collaborated with RATIO Architects in a competition to reimagine the Krasl Art Center campus including placement of a new site-specific Richard Hunt sculpture. The plaza is designed to highlight the Hunt sculpture as part of a sculpture garden that creates a park-like space for relaxation, reflection and creativity. The paths provide Universal-Access through the garden past temporary sculpture sites to the Art Center Building. Lotus, the Hippopotamus sculpture and a children's favorite will have a prominent 'hugging' place in the garden. The garden, adjacent parking lot, and the nearby Bluff Park will periodically be connected to create a festival space for special events. This project completes a sequence of planning and design services James Gamble and LDC have provided to St. Joseph over a span of 35 years including developing a "Accessible Downtown" strategy for improvements above and below the "Bluff" that yielded the redesign of State Street, the Bluff Stairway and overlook structure, and a sidewalk and path system linking the Arboretum to the Bluff stairway and the Silver Beach Park. The future of Krasl Art Center includes expansion of gallery space, new building facades and entry, and a multipurpose indoor event space. The first phase of the garden enhancements is slated for 2018-19.



North Campus "Upwells" Sculpture, University of Illinois Urbana/Champaign, Illinois



North Campus "Upwells" Sculpture, University of Illinois

The North Campus Sculpture Plaza is the core of the University of Illinois Urbana/Champaign engineering campus. The plaza forms the base for a granite, bronze and water celestial sculpture designed by sculptor Steven Leukin. A 40 foot granite spire casts shadows at the seasonal equinoxes onto bronze water domes. LDC was selected to develop the landscape design plans for the entire north campus area to work with the artist to provide technical oversight, construction details, and integrate his sculpture into the quadrangle's design. A strong bond with the artist formed during design and to show his appreciation he presented LDC with a small bronze sculpture for their office.



Institutional Design

Archives

Client

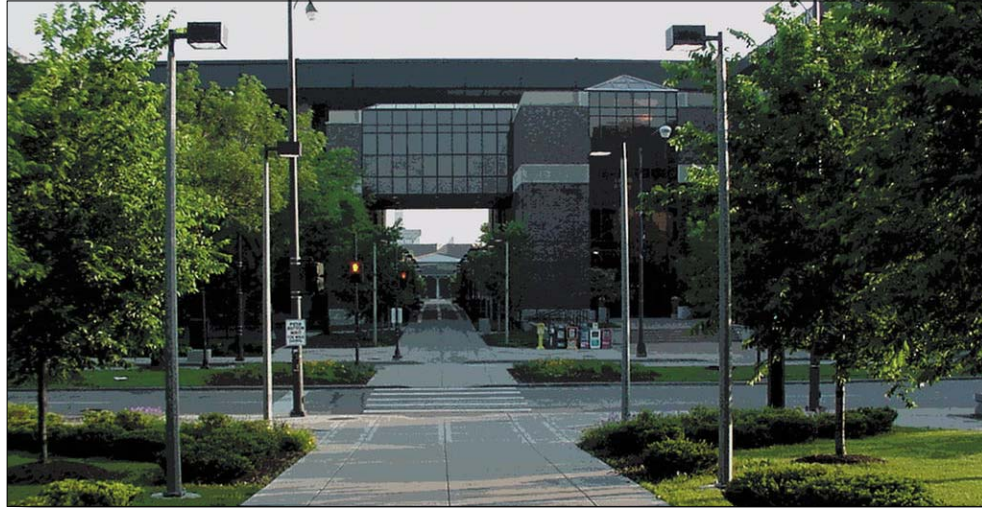
University of Illinois
Chicago Campus
Chicago, Illinois

Service Provided

cost estimates
site plan
implementation planning
design and
construction documents
construction administration

Design Elements

walkways
site utilities
grading and drainage
fountain systems
special paving systems
walls
landscape development



The University of Illinois Chicago Core Area project celebrates the distinctly Midwestern landscape and complements its character.

The campus landscape design by LDC was developed to embrace and enhance the academic quality of life. Working with an architect on the campus renovation project, LDC complemented the new buildings, removal of an overhead concrete walkway system, and the new walkway system by designing new landscapes for special sculpture, seating and open space.



Client

University of Illinois
Chicago Campus

Service Provided

cost estimates
site plan
implementation planning
design and
construction documents
construction administration

Design Elements

walkways
site utilities
grading and drainage
fountain systems
special paving systems
walls
landscape development



LDC's work at the UIC Medical Center Campus included creating a new plaza and entry on an existing street and developing a multiuse courtyard. The existing Arthington Street roadway was removed and replaced by a pedestrian entry plaza in front of the Illini Union. As part of this project a new courtyard was developed with a series of terrace walls to provide spontaneous seating for students living in the nearby dorm and a gathering space for special events sponsored by the Illini Union.





Community Center/Maintenance Facility Glencoe, Illinois

Client
Glencoe Park District
Glencoe, Illinois

Service Provided
site analysis
design concepts
master plan
cost estimating

Design Elements
parking
community center
maintenance facility
recreation facility



As part of the 2000 Comprehensive Master Plan for the Glencoe Park District, LDC recommended needed improvements to the Northfield Park Community Center. A master plan was prepared for the park which included site survey, site analysis, public input, alternative concepts, and the final Master Plan.

The existing 10 acre park contained a former elementary school that was converted to a community center by the Park District. In addition, several outdated playgrounds existed, as well as a new skateboard park and a ballfield. In the rear of the property was located the districts maintenance facility, which was inadequate and poorly utilized.

LDC prepared the Master Plan for improvements to the entire property, focusing on a more efficient layout for the maintenance facility. New buildings for material storage, equipment, and operations were developed in a phased improvement schedule over a 5 year period.



Client

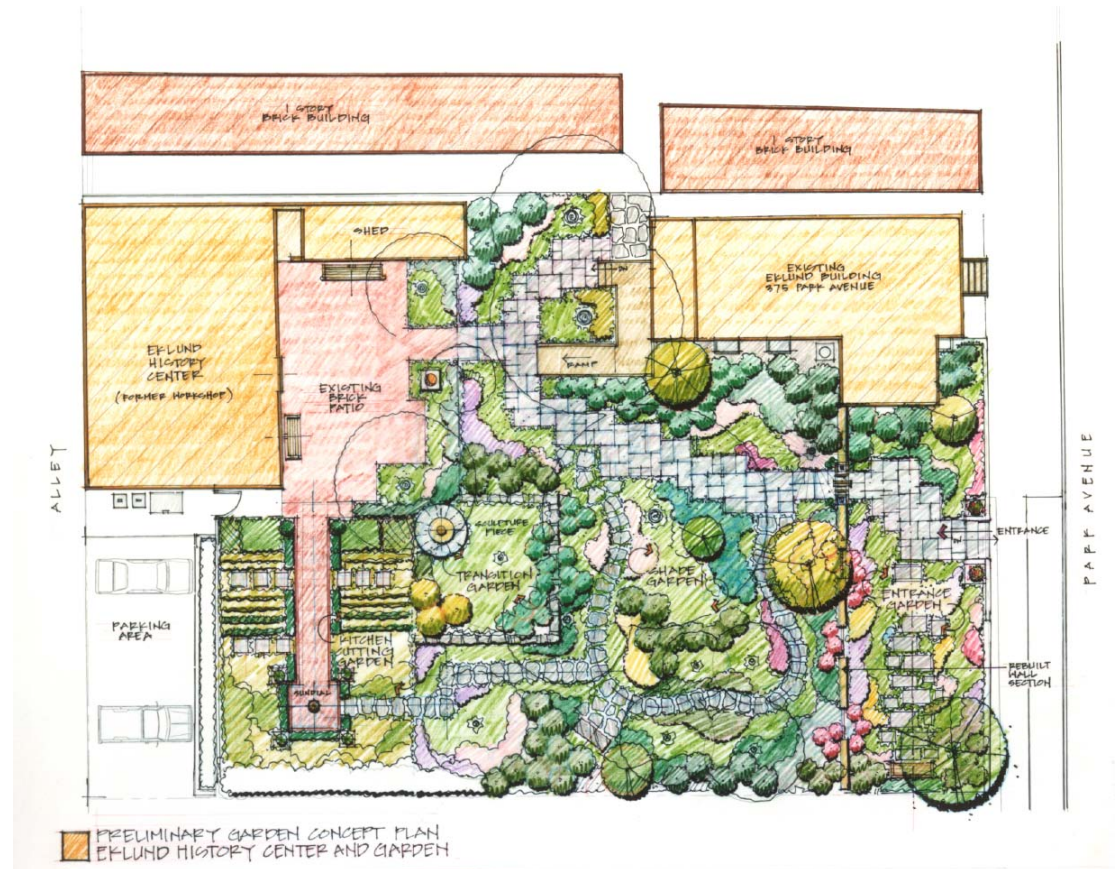
Glencoe Historical Society
Glencoe, Illinois

Service Provided

- alternative design concepts
- schematic design
- site plan

Design Elements

- walls
- sculpture
- paving
- landscape planting development



Preliminary Concept Plan
Historic Garden
Glencoe Historical Society
Glencoe, Illinois

Land Design Collaborative, working with the Glencoe Historical Society, developed a garden plan for the new Glencoe Historical Society property.

The garden is made up of a series of “rooms” beginning with the entrance where a wall with transparent characteristics helps to define the space without closing it off from the rest of the area. This space leads into the shade garden through a meandering flagstone path which evolves into the transition garden where sculptural elements are found. The kitchen garden completes the plan where a formal brick walk terminates at a sundial.

Many interesting elements including colorful and unique plantings, primary and secondary walkways, and seating throughout the garden.





Glencoe Village Hall

Glencoe, Illinois

The Glencoe Village Hall entry walkway was redesigned to compliment the downtown streetscape designed by Land Design Collaborative. An existing planter, landscape and entry area were included in the redesign and linked to the downtown streetscape sidewalk with new brick paver walkways. The brick walks replaced concrete sidewalks and were widened to meet accessibility standards and accommodate the flow of pedestrians to and from the Village Hall.

Client

Village of Glencoe, Illinois

Service Provided

- alternative design concepts
- cost estimates
- design and construction documents

Design Elements

- special paving
- entrance walkway
- landscape development



Client
Village of Hoffman Estates, Illinois

Service Provided
alternative concepts
construction design
cost estimate
construction
administration

Design Elements
plaza
special paving
fountain
landscaping



After



Before

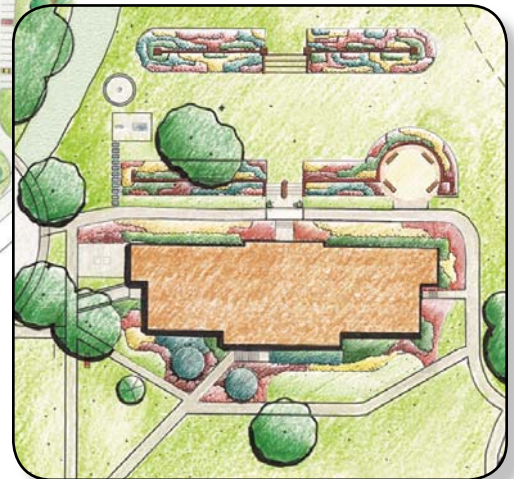
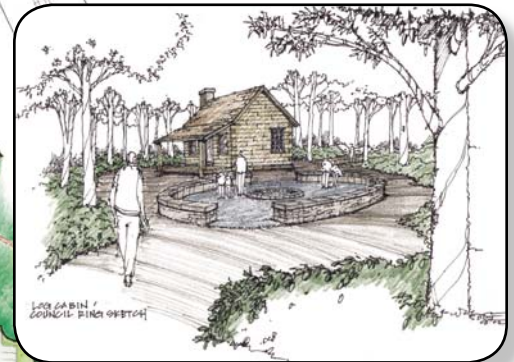
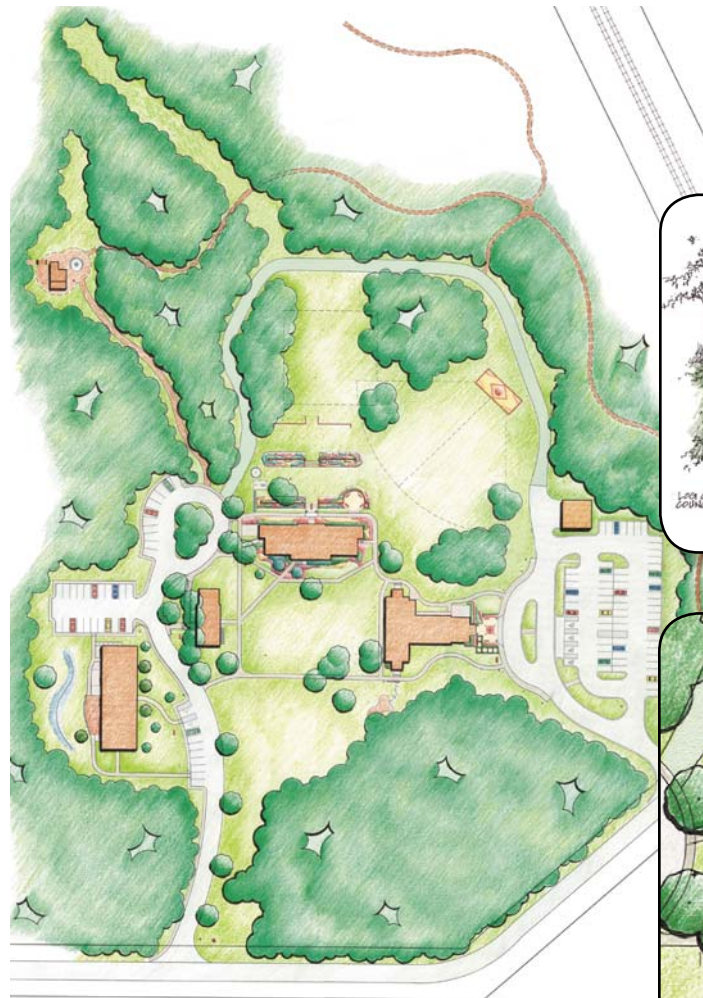
Formerly the corporate headquarters for an insurance company, the Village of Hoffman Estates acquired the building and site in the early 1990's for use as a new Village Hall and library. Following renovation of the building, Land Design Collaborative was retained to redesign the entrance to the building.

The existing building entrance was poorly defined, narrow, hidden by vegetation, and not very inviting to the public. Land Design Collaborative prepared a number of concept plans investigating the unique form of the building, providing an attractive and welcoming entrance experience, and presenting a clear and well defined entrance to the public building. The final design provided for two circle forms contrasting with the angular form of the building. The first circular form with a planter identified the entrance from the parking lot and drop-off area, while the second created a seating area near the building entrance. The concrete paving was specially scored to repeat the triangular form of the building, while paving brick borders emphasize the walk and circular forms. A variety of plantings, including flowering shrubs and trees, perennials, and ground covers, were planted to provide color, texture, and interest. Both raised planters serve as low seating walls. The planter in the center of the seating area was initially planted, but in the future may be developed with a fountain or sculpture.

Client
City of Lake Forest, Illinois

Service Provided
master plan
alternative concepts

Design Elements
garden plantings
patios
pergola
garden wall
turf steps
council ring
trails
handicap access



LDC provided a master plan for the overall improvement of the Grove Cultural Center complex as well as detailed site design. The master plan retains the existing expansive carpet of green lawn and tree groves while limiting planting only to areas close to the buildings, thus enhancing the campus-like character of the site. Bold swaths of perennials and ornamental grasses are proposed in lieu of the more traditional border planting.

Improvements to the senior center highlight the need to accommodate the senior popu-

lation. Features include a pergola, a seating area and lush border plantings, in addition to attractive focal points and an outdoor socialization area close to the building.

A trail is proposed to connect the site with a school to the north and the adjacent nature preserve area to the south of the site. A council ring is added near the log cabin to serve as a focal point and gathering place along the north trail.



Lincolnwood Fountain

Lincolnwood, Illinois

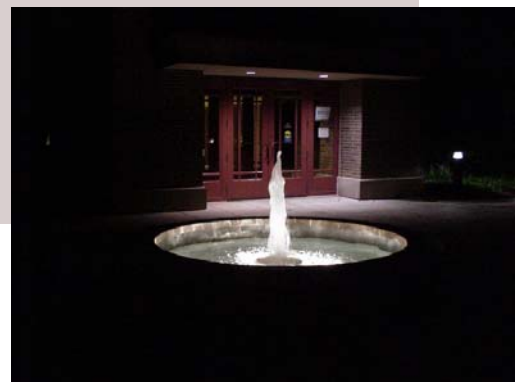
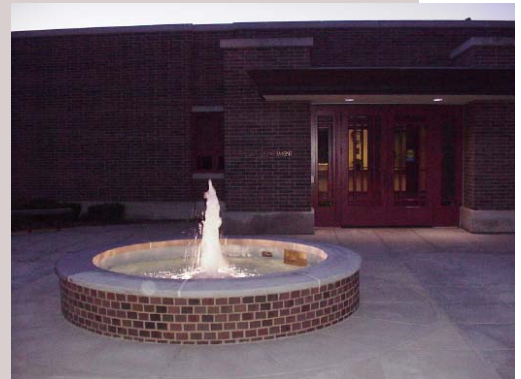
Client
Village of
Lincolnwood, Illinois

Service Provided
alternative
design concepts

Design Elements
fountain
lighting



Land Design Collaborative, Inc. prepared several concept design alternatives for this fountain located in the courtyard of the Village of Lincolnwood Village Hall building. The fountain enlivens the barren courtyard that links two adjacent buildings. Shown here are photographs of the fountain at various times of the day and night. Upon sunset, the well-choreographed lighting accentuates the dancing ripples of the fountain.



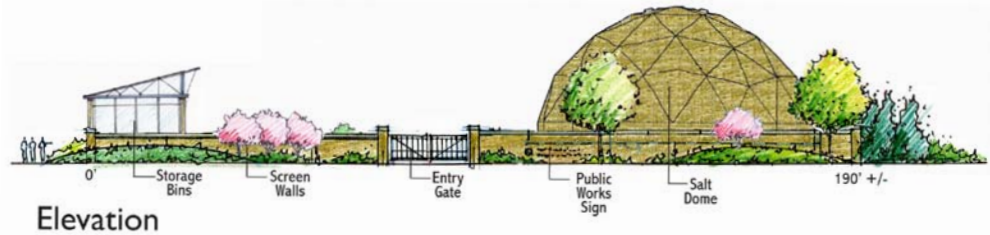
Lincolnwood - Public Works Facility

Lincolnwood, Illinois

Client
Village of
Lincolnwood, Illinois

Service Provided
design concepts
master plan
cost estimating
construction documents
construction services

Design Elements
masonry walls
paving
ornamental fencing
access gates
storage structures
signage
lighting
irrigation
landscaping



The Village of Lincolnwood retained LDC to develop a master plan for the expansion and improvement of its municipal public works yard adjacent to its new public works building. The master plan organized all exterior site public works operations into two primary areas and coordinated them with interior building operations.

Recommended improvements were prioritized and programmed to be implemented over three development/funding phases. The first phase included construction of a new salt storage dome for winter salting operations. Phase two, currently under construction, consists of a decorative masonry wall to enclose three sides of the yard, temporary material storage bins, concrete paving, ornamental fencing and access control gates, lighting, stormwater detention, security fencing, automatic irrigation and landscaping.

As part of an adjacent Village property, a bike path that links into the overall Village bikeway system (plan developed by LDC) is proposed. A small landscaped park with sculpture complements the public parking facility and new connector roadway (landscaped by LDC) which links to a large community park.

Phase three of the expansion consists of securing ownership of an adjacent abandoned rail line so that the yard can be further expanded to its final form and almost doubled in size. At that time, the temporary material enclosures will be removed and permanent, metal roofed structures constructed.

Client

Lohan Associates
Chicago, Illinois

Service Provided

cost estimates
site plan
implementation planning
design and
construction documents

Design Elements

walkways
site grading
landscape planting



The landscape of St. Mary Parish and its new church has a frugality and simplicity comparable to its 1800's heritage. The parish property has been divided into a number of various sized fields, each with its own distinct landscape character. Some fields, such as those around the church, will be mowed weekly to permit easy access and use of the grounds for gatherings. Other, less used areas, will be mowed monthly or when special events require, providing a hint of the original prairie and agricultural character that existed prior to the onset of the modern suburban landscape. Around the pond, native plants provide erosion control, water filtration and habitat for wildlife.

The fields and natural areas are dissected by informal trails cut through the grass that provide opportunities for parish visitors and students from the adjacent parish school to learn the lessons of the native landscape. Wind breaks of trees along the perimeter of the property protect its interior spaces from harsh weather and nearby, encroaching residential back yards. The main church grounds are planted with shade and ornamental trees. Plantings of evergreen and flowering shrubs, ground cover, and beds of perennial and annual flowers that are colorful, but remain moderately low and restrained. Near the entry of the church, a small orchard of flowering trees, similar to the main path from the parking lot, is designed to guide people to the entrance of the church and create a feeling of spiritual meditation.





Oak Brook Library Enhancement

Oak Brook, Illinois

Client

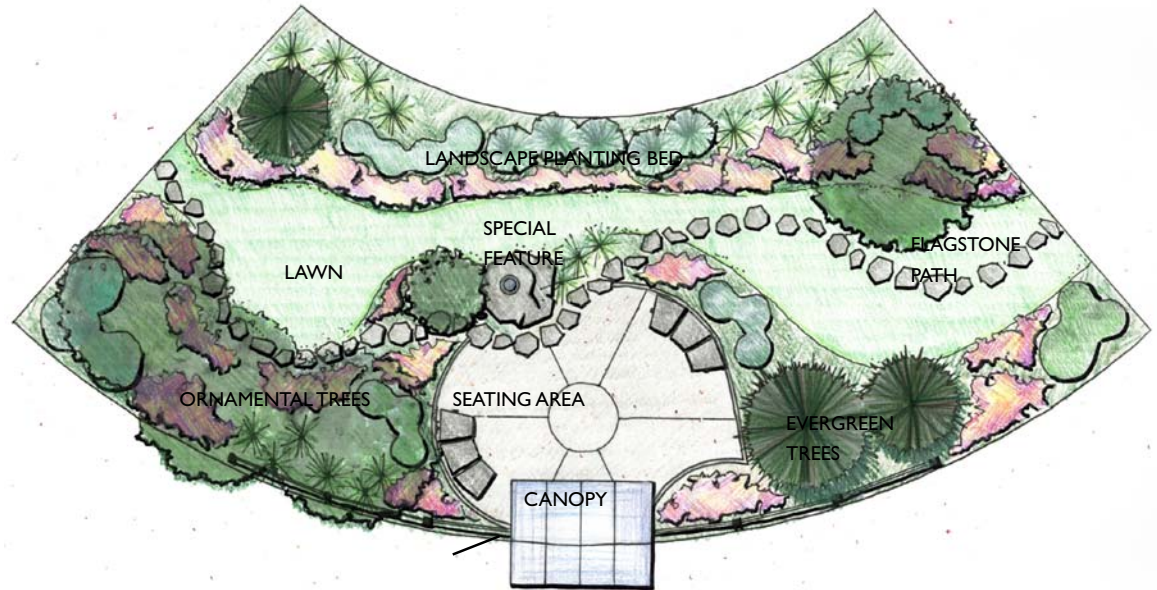
Oak Brook Library
Oak Brook, Illinois

Service Provided

- planting design
- landscape plan
- alternative design concepts
- public display panel

Design Elements

- pedestrian walkways
- landscape plants
- entrance feature
- sculpture/water feature
- seating areas



The Oak Brook Library building, built in 2002, is an example of contemporary architecture utilizing natural stained wood siding, glass walls, with gray or natural finish metal frames, and a matching metal sun screen. The form of the building is organic in plan, forming an undulating circular form with a central domed roof. The site area surrounding the building has been divided into gardens flanking the main entry with a children's garden to the south of the entry doors and the Friend's of the Library Donor's Garden on the north side.

visitor protection from the elements, seating, and a space to hold outdoor events.

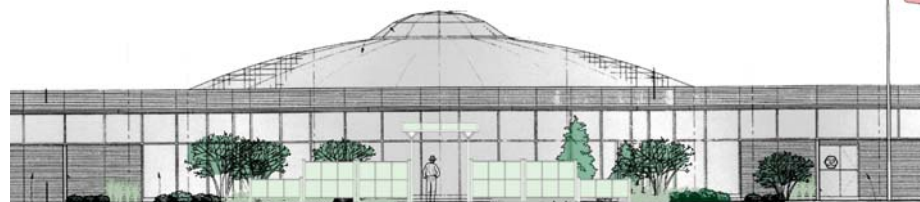
The resulting landscape plan carries the organic look of the building into the garden using a curvilinear design consisting of landscape planting beds and a flagstone path that leads visitors through the main garden and into the Friend's Donor Garden.

These gardens, along with the parking lot islands, will soften the appearance of the library and provide attractive places for people to gather, sit, view and read.

Working with the Village and the Library staff, LDC developed a staged landscape plan to improve the library site with an impact in the first growing season. The design is visually interesting from inside the library and provides a space for outdoor reading. Other design considerations include pedestrian circulation, overall plant health, way-finding,



EXISTING



PROPOSED



Oak Brook Library Screening

Oak Brook, Illinois

The Oak Brook Library building, built in 2002, is an example of contemporary architecture utilizing natural stained wood siding, glass walls, with gray or natural finish metal frames, and a matching metal sun screen. The form of the building is organic in plan, forming an undulating circular form with a central domed roof. The site behind the building faces the soccer fields of the Polo Grounds Park.

Working with the Village and the Library staff, LDC developed a landscape plan to screen and buffer the passive use library from the active soccer sports fields. Utilizing shade, evergreen and flowering trees planted in a series of raised berms, LDC created an attractive landscape buffer. Flowering shrubs further add seasonal color and interest to the berms. Lawn surrounds the planting berms and allows for pedestrian access between the two facilities. Trees were located and spaced to complement views from inside the library building where lounge areas are provided.

Client

Oak Brook Library
Oak Brook, Illinois

Service Provided

planting design
landscape plan

alternative
design concepts

public display panel

Design Elements

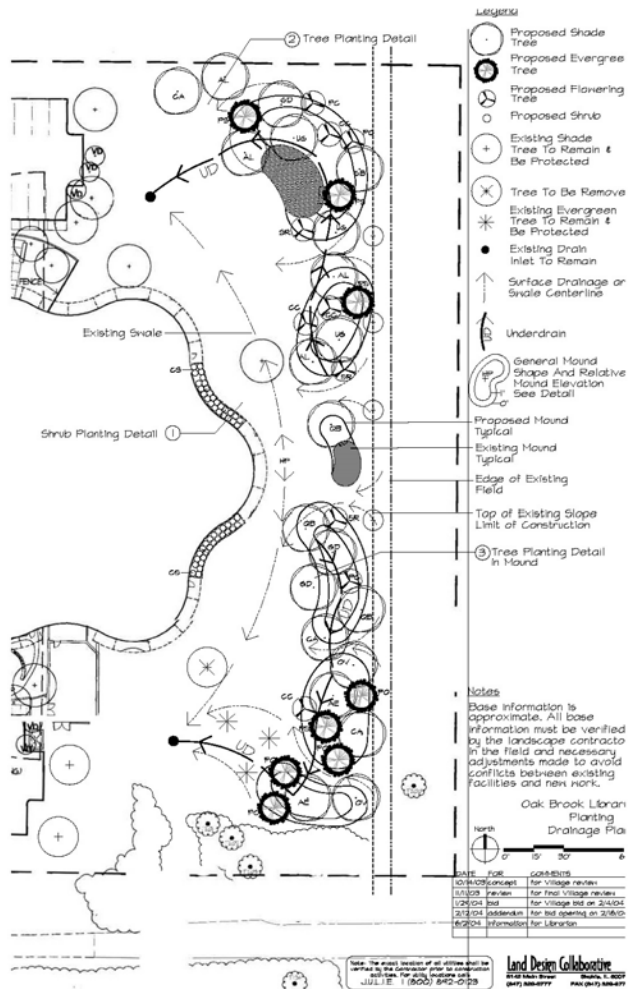
pedestrian walkways

landscape plants

entrance feature

sculpture/water feature

seating areas





North Campus Sculpture Plaza

Urbana, Illinois

Client

University of Illinois
Urbana/Champaign
Campus
Urbana, Illinois

Service Provided

- cost estimates
- site plan
- implementation planning
- design and construction documents
- construction administration

Design Elements

- walkways
- site utilities
- grading and drainage
- fountain systems
- special paving systems
- walls
- landscape development

Construction Budget

\$0.4 million

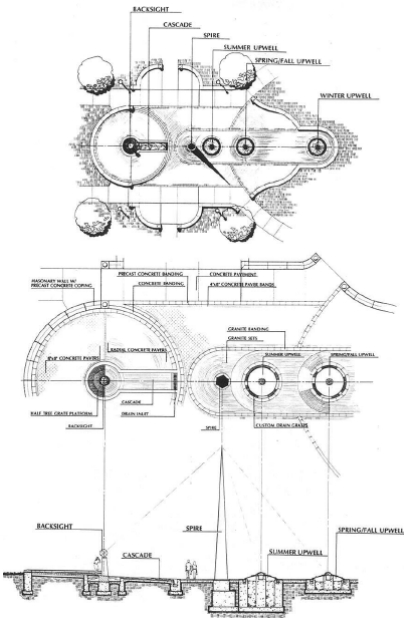


The North Campus Sculpture Plaza is the core of a new campus quadrangle at the Urbana/Champaign campus of the University of Illinois.

The plaza forms the base for a granite, bronze and water celestial sculpture designed by DePaul University sculptor, Steve Leukin. A 40 foot spire of polished carnelian granite casts shadows at the seasonal equinoxes onto bronze water domes. A sight piece behind the spire is aligned to view the North Star at the top of the spire.

LDC was responsible for placement of the Sculpture Plaza within the North Campus Master Plan and development of the Plaza base elements.

The North Campus Sculpture Plaza received a Merit Award from the Illinois Chapter of the American Society of Landscape Architects.



© 1986- 2019 Material Presented in this Booklet is Property
of Land Design Collaborative. All Rights Reserved.